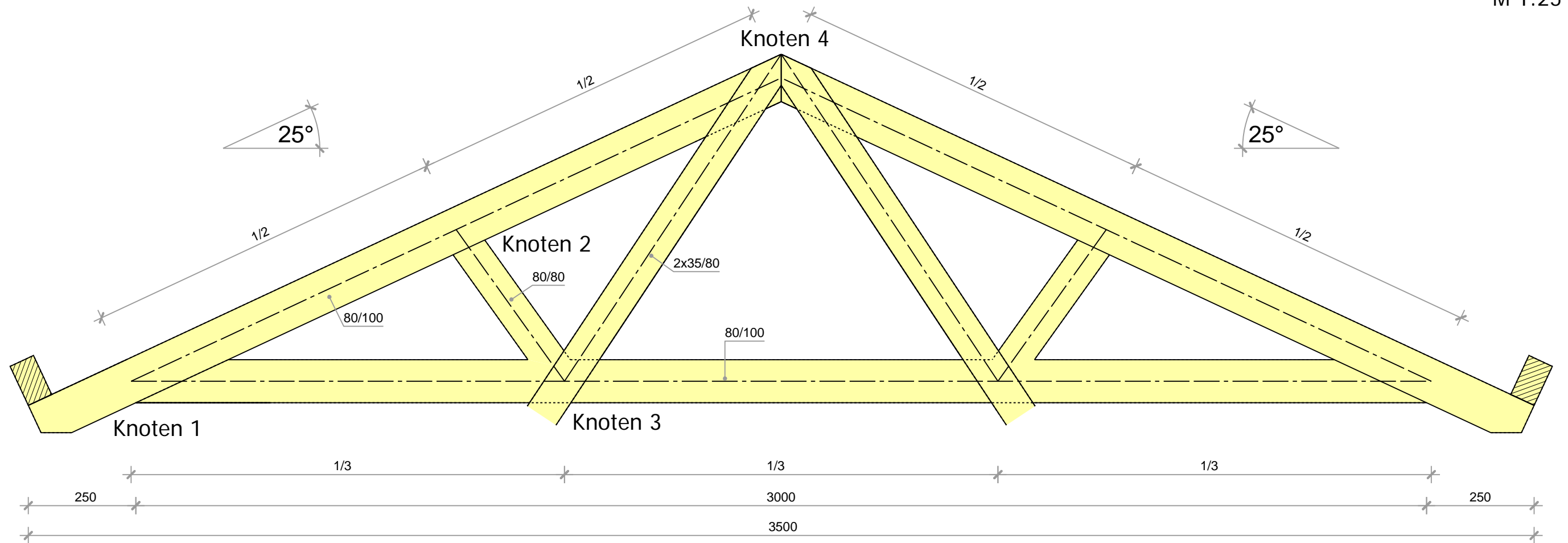
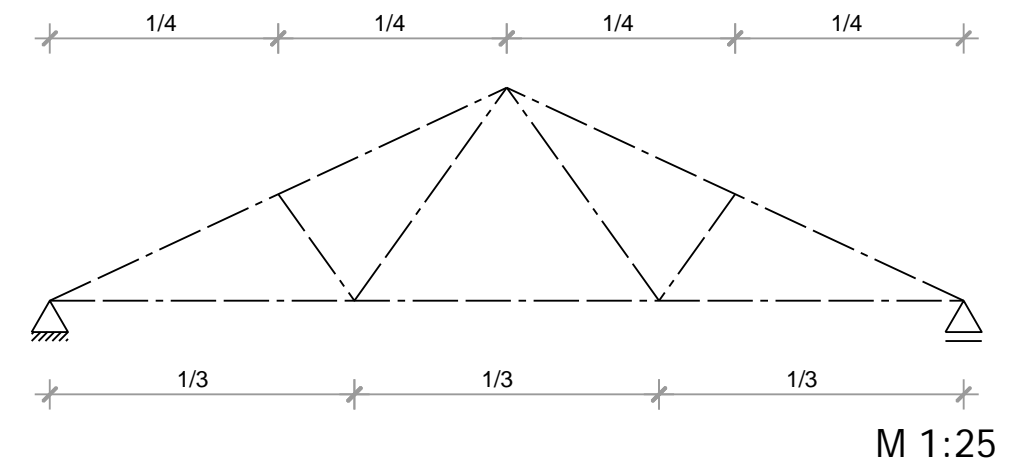
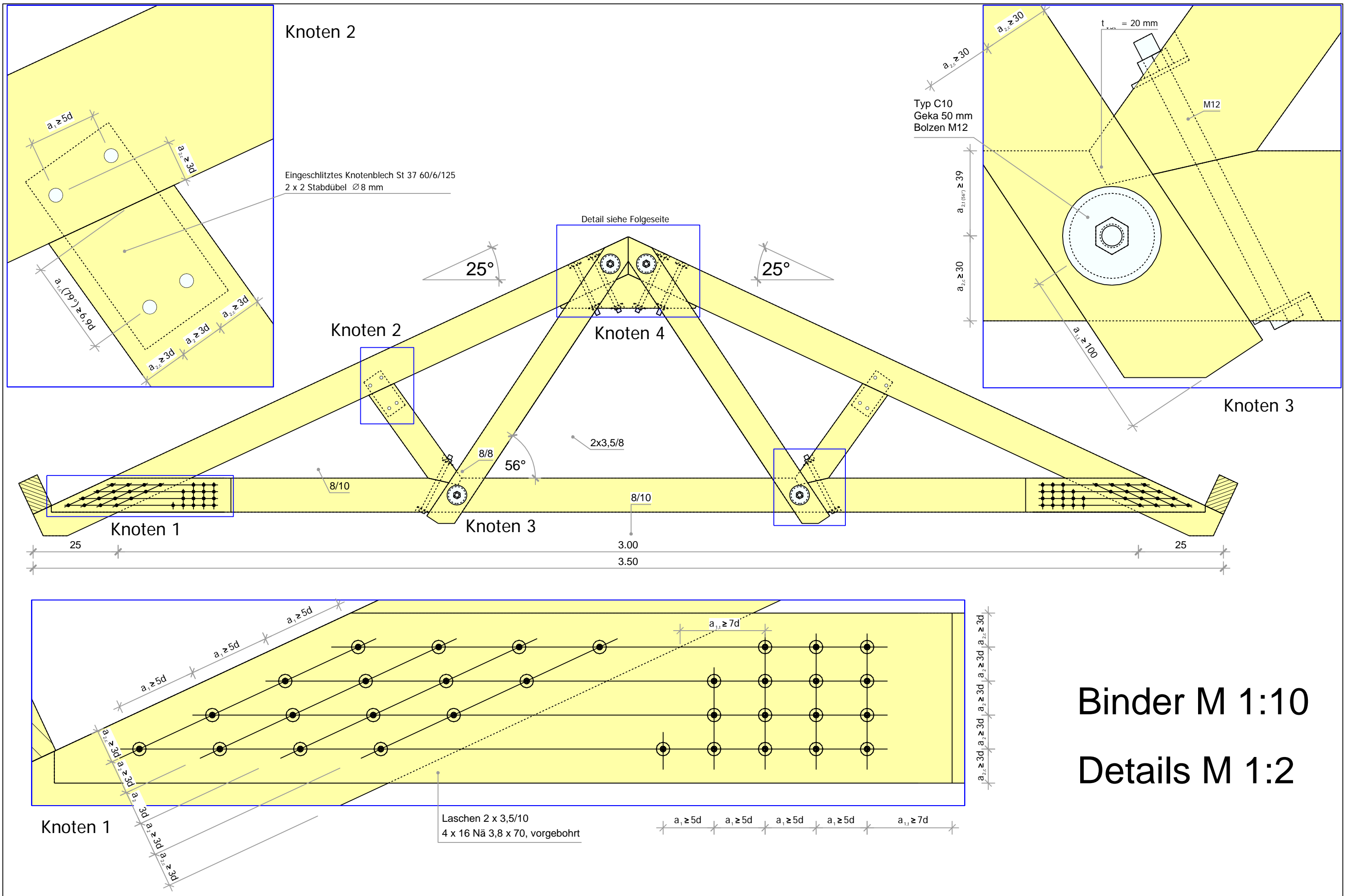


statisches System

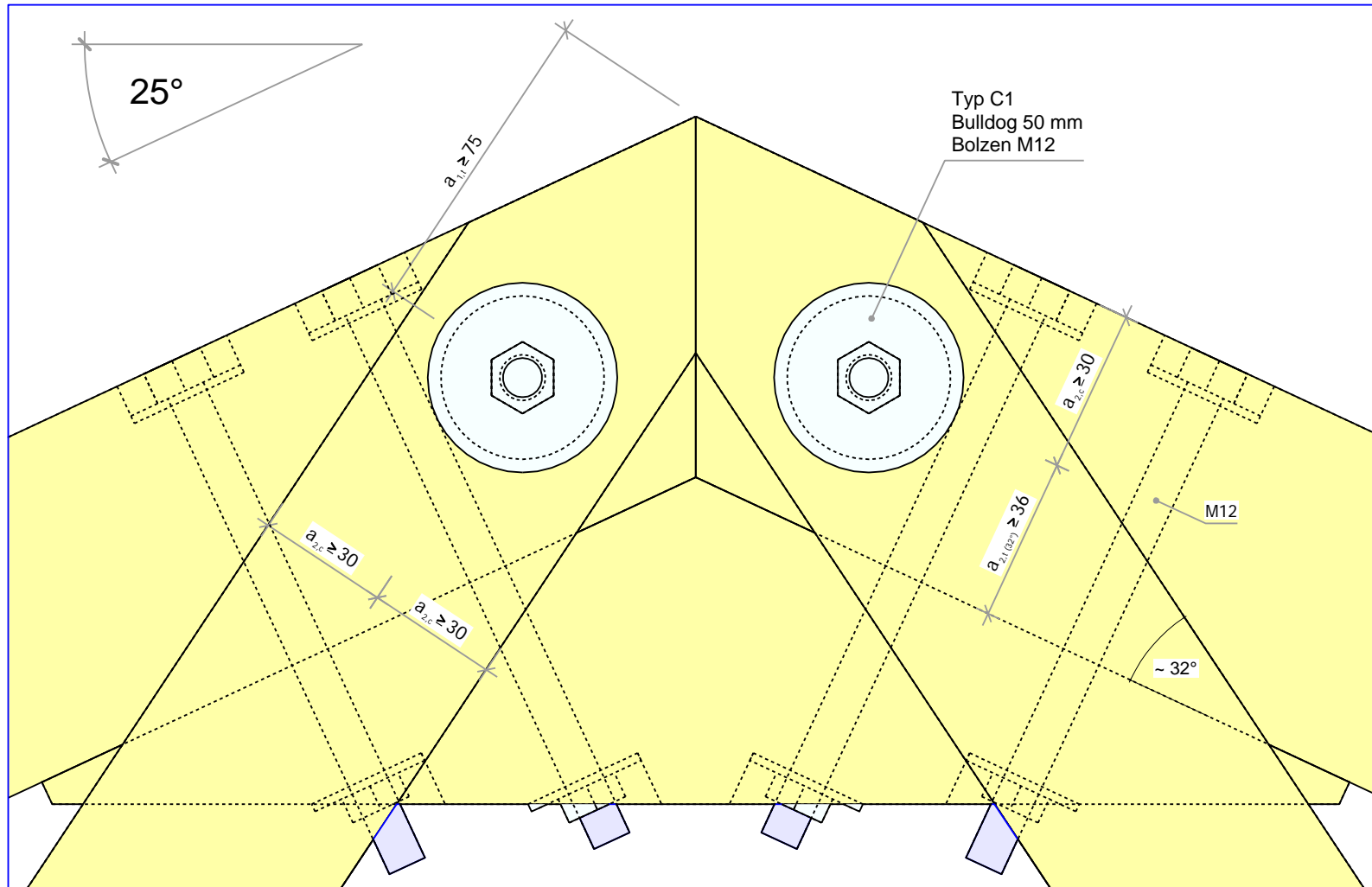


- Knoten 1: Laschen 2 x 3,5/10
4 x 16 Nä 3,8 x 70, vorgebohrt
- Knoten 2: Eingeschlitztes Knotenblech St 37 60/6/125
2 x 2 Stabdübel 8 mm
- Knoten 3: Typ C10 Geka 50 mm, Bolzen M12
 $t_{vst} = 2 \text{ cm}$
- Knoten 4: Typ C1 Bulldog 50 mm, Bolzen M12

M 1:10



Binder M 1:10
 Details M 1:2



Knoten 4

Firstknoten M 1:2